

Porta tagliafuoco vetrata STAHLGLASS REI 30-60 e RE 120

Costruita con **profilo tubolare portante in acciaio tubolare mm. 15/10**, complanare ed elettrosaldato. I profili sono riempiti di speciale materiale sublimante, con guarnizione termo espandente posta lungo tutto il perimetro. Fornita con certificato a norma di Legge.

Caratteristiche tecniche:

- Vetri fissati con adeguati fermavetri e guarnizioni autoestinguenti.
- Di serie: coppia di maniglie nere con rosetta, cilindro con tre chiavi, serratura antincendio, chiudiporta aereo su entrambe le ante.
- Finiture speciali: oltre alla verniciatura RAL, possibile realizzazione in acciaio inox.

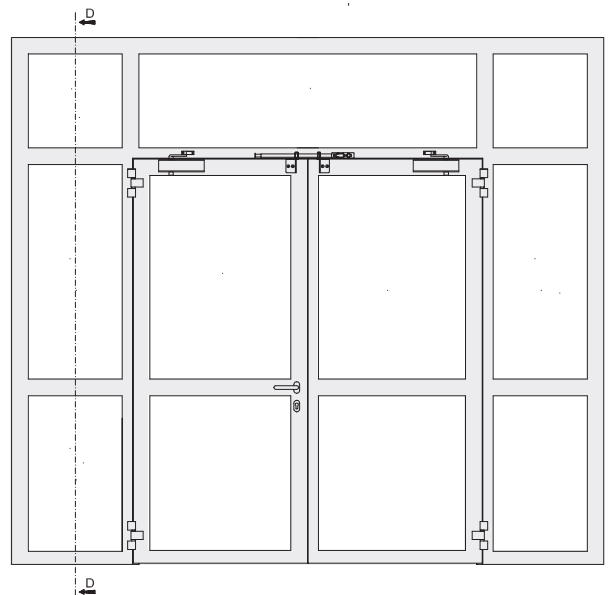
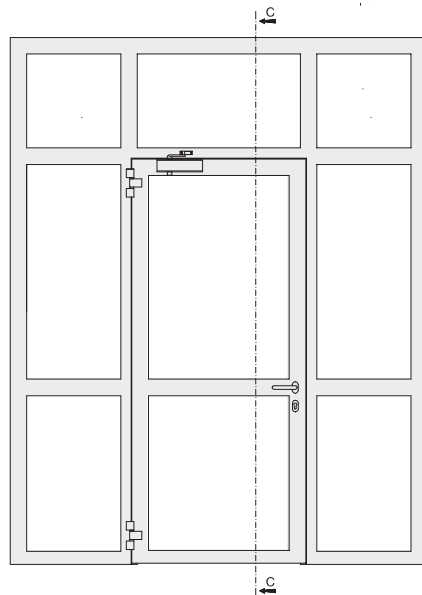
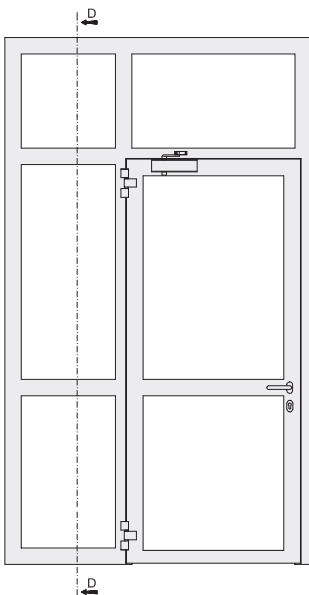
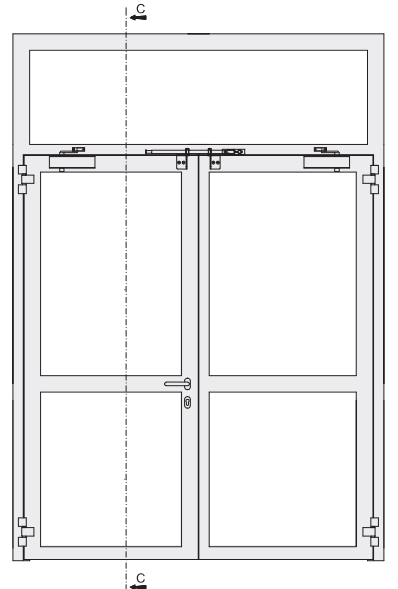
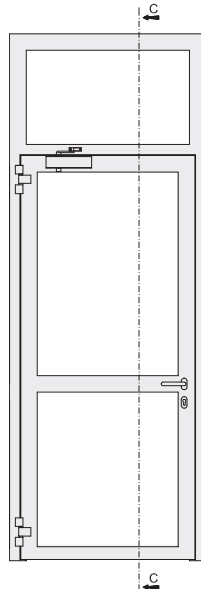
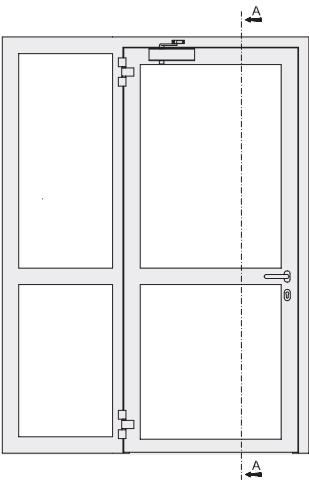
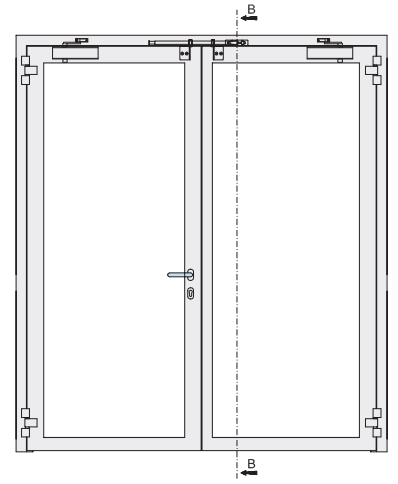
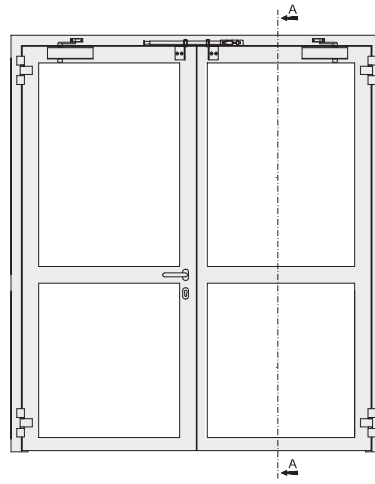
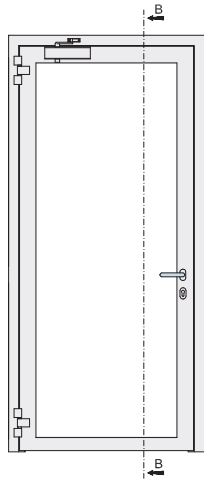
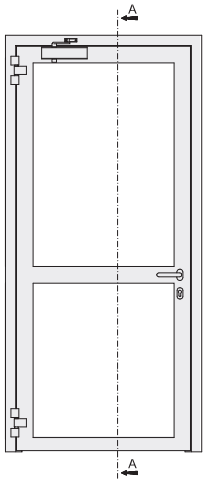
Fire proof glazing door STAHLGLASS REI 30-60 and RE120

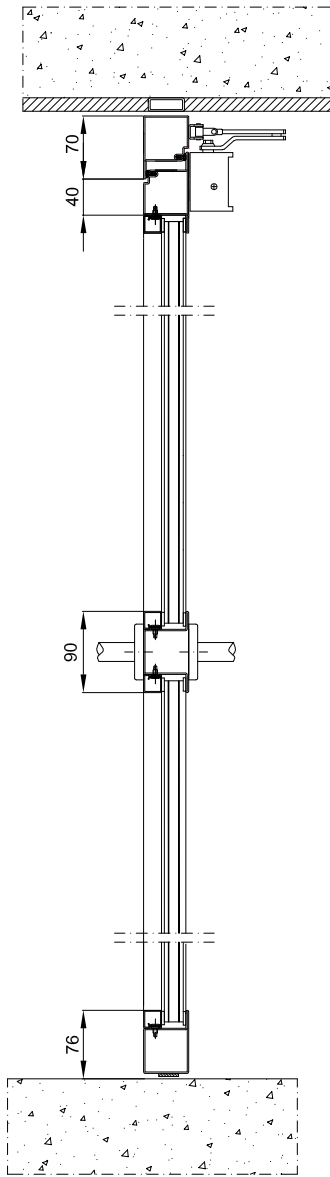
Constructed by a steel tubular profile mm. 15/10. Profiles filled with special isolated material, with thermo expanding gasket on the perimeter. Supplied in accordance to the Law. Technical details:

- Fire proof glasses fixed by means of glazing beads and gasket in between.
- Standard equipment: hinges with three wings, lock on both leaves, door closers.
- Special finishing: painting in RAL colors, or stainless steel realization.

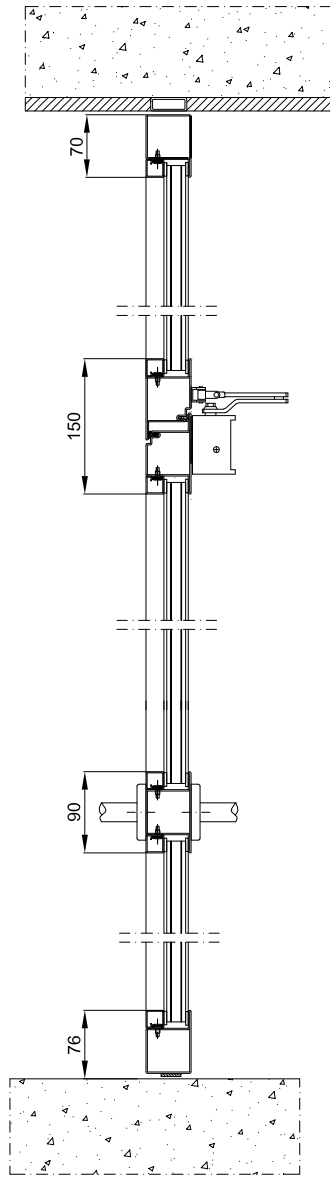


STAHLGLASS, complex glazed door REI 30-60, RE 120

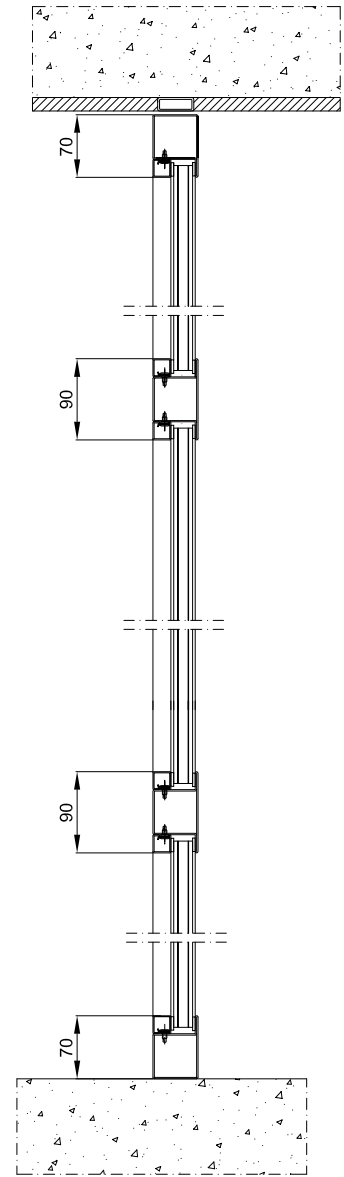




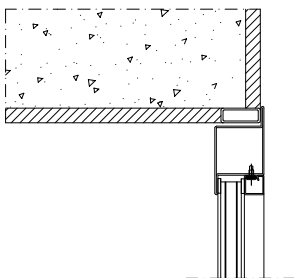
SEC A-A



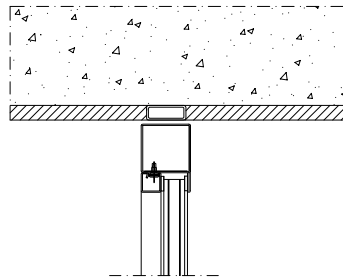
SEC B-B



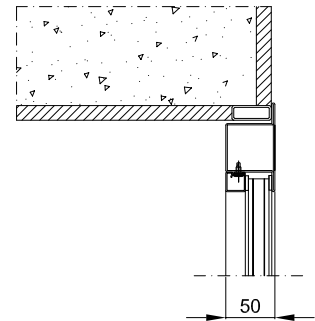
SEC D-D



Mounting on "Z" type frame



Mounting on "L" type blockframe



Mounting on "T" type frame
(opposite opening)